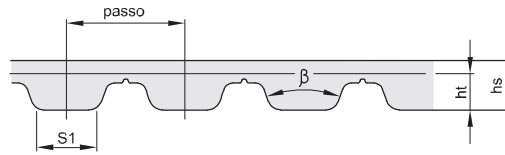


**AT 10 PASO 10 mm**

MATERIALE: POLIURETANO

código	denti	sviluppo
AT 10 500	50	500,0
AT 10 560	56	560,0
AT 10 600	60	600,0
AT 10 610	61	610,0
AT 10 660	66	660,0
AT 10 700	70	700,0
AT 10 730	73	730,0
AT 10 780	78	780,0
AT 10 800	80	800,0
AT 10 940	84	840,0
AT 10 890	89	890,0
AT 10 920	92	920,0
AT 10 960	96	960,0
AT 10 980	98	980,0
AT 10 1000	100	1000,0
AT 10 1010	101	1010,0
AT 10 1050	105	1050,0
AT 10 1080	108	1080,0
AT 10 1100	110	1100,0
AT 10 1150	115	1150,0
AT 10 1210	121	1210,0
AT 10 1250	125	1250,0
AT 10 1350	135	1350,0
AT 10 1400	140	1400,0
AT 10 1420	142	1420,0
AT 10 1600	160	1600,0
AT 10 1800	180	1800,0

código	larghezza cinghia mm
AT 10	16
	25
	32
	50



**MATERIALE: POLIURETANO CON CAVI IN ACCIAIO.**

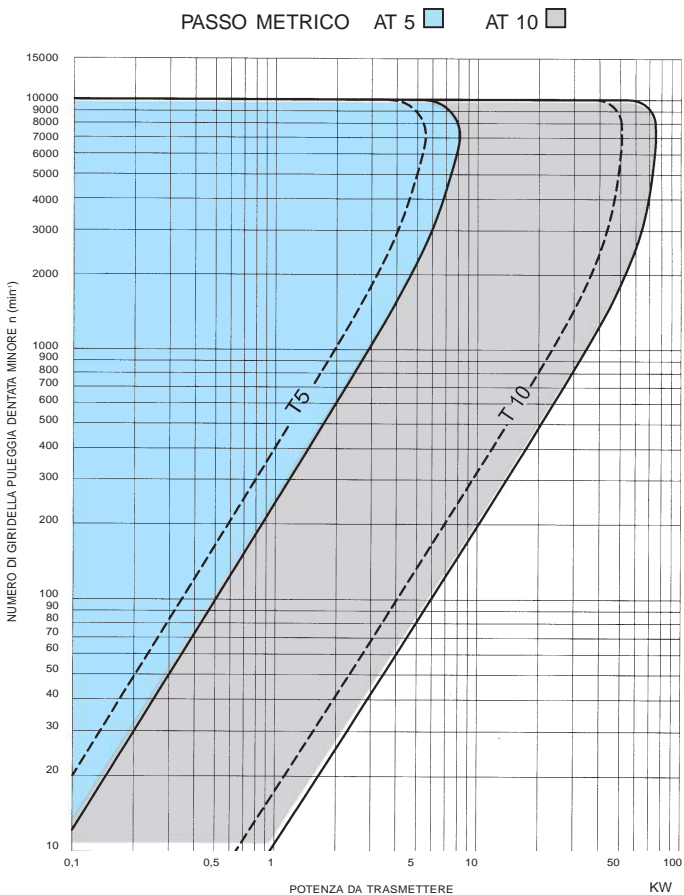
**DIMENSIONAMENTO E TOLLERANZE SULLO SPESSORE**  
 SIZES AND TOLLERANCES OF THE THICKNESS

tipo	passo mm	hs mm	toll. mm	ht mm	S1 mm	β gradi
<b>AT 5</b>	5	2,7	±0,15	1,2	2,5	50
<b>AT 10</b>	10	4,5	±0,30	2,5	5,0	50

**TOLLERANZE SULLE LARGHEZZE**  
 WIDTH TOLLERANCES

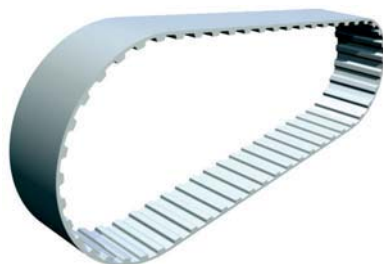
passo mm	larghezza mm	tolleranza mm
5	10	± 0,50
5	16	± 0,50
5	25	± 0,50
10	16	± 0,50
10	25	± 0,50
10	32	± 0,50
10	50	± 0,50

**SCELTA DEL PASSO DELLE CINGHIE DENTATE**  
 BELT PITCH SELECTION CHART



**TOLLERANZE SULLE LUNGHEZZE**  
 LENGTH TOLLERANCES

lunghezza primitiva mm	tolleranza mm
) 305	± 0,28
> 305 - 390	± 0,32
> 390 - 525	± 0,36
> 525 - 630	± 0,42
> 630 - 780	± 0,48
> 780 - 990	± 0,51
> 990 - 1250	± 0,64
> 1250 - 1560	± 0,76
> 1560 - 1960	± 0,88
> 1960 - 2250	± 1,04



**AT 5 PASO 5 mm**

MATERIALE: POLIURETANO

código	denti	sviluppo
AT 5 255	51	255,0
AT 5 300	60	300,0
AT 5 420	84	420,0
AT 5 455	91	455,0
AT 5 500	100	500,0
AT 5 545	109	545,0
AT 5 600	120	600,0
AT 5 660	132	660,0
AT 5 710	142	710,0
AT 5 750	150	750,0
AT 5 780	156	780,0
AT 5 825	165	825,0

código	larghezza cinghia mm
AT 5	10
	16
	25